



College of
Policing

college.police.uk

BetterProfessionalsTM
for **Better**Policing

Improving the system

CEBE

Rachel Tuffin, Interim CEO

15/11/2017

Professional
development

Education

Licence to
practise

Knowledge
and Evidence
Base

Code of Ethics

College Knowledge



BODY WORN VIDEO (BWV)

Body worn video technology and its use is now well-established in UK police forces, with the majority of forces having some kind of BWV capability.

BWV does not replace traditional means of evidence gathering, but acts as an additional form of evidence. Research has indicated that BWV also has a range of potential benefits beyond evidence gathering.



PRE-CHARGE BAIL

The law on pre-charge bail has changed and new provisions have been added to the Police and Criminal Evidence Act 1984. The new provisions apply to all arrests made from 3rd April 2017. When considering the use of pre charge bail, there is now an overriding presumption that the suspect will be released without bail in most cases unless strict criteria are met. This includes release from arrest prior to attending a police station/street bail.

Pre-charge bail itself is subject to time limits and various statutory and judicial safeguards.

What
Works
Crime Reduction

ABOUT US RESEARCH CRIME REDUCTION TOOLKIT RESEARCH MAP GET INVOLVED

Home / Crime Reduction Toolkit

About the Crime Reduction Toolkit

Our effect scale

Our quality scale

Method Statement

Key

Quality of evidence

No information

Limited quality

Moderate quality

Crime Reduction Toolkit

Intervention	Impact on crime	How it works	Where it works	How to do it	What it costs
	Effect	Mechanism	Measurable	Implementation	Economic cost
Alcohol ignition interlock	✓	✓	✓	✓	✓
CCTV	✓	✓	✓	✓	✓
CPTED (robbery)	✓	✓	✓	✓	✓

Pursue
relentless
disruption and
prosecution

Prevent
people
becoming
involved in SOC

Protect
reduce the
vulnerability
amongst our
communities
from the threat
of SOC

Prepare
ensuring the
necessary
capabilities exist
to tackle SOC

DISRUPTING
SERIOUS AND
ORGANISED
CRIMINALS: MENU
OF TACTICS

Menu of tactics now published



Knowledge - creating and getting it used

If surveys show we rely on and prefer professional experience rather than research

BUT

The more we know about research the less they believe we alone have enough information about crime and what to do about it

AND

The more we are exposed to research the more likely we are to be willing to do experiments

THEN

**When research is part of our professional experience
- we will be much more likely to use it!**

CPD

Policing

Education

Child
Care

Health

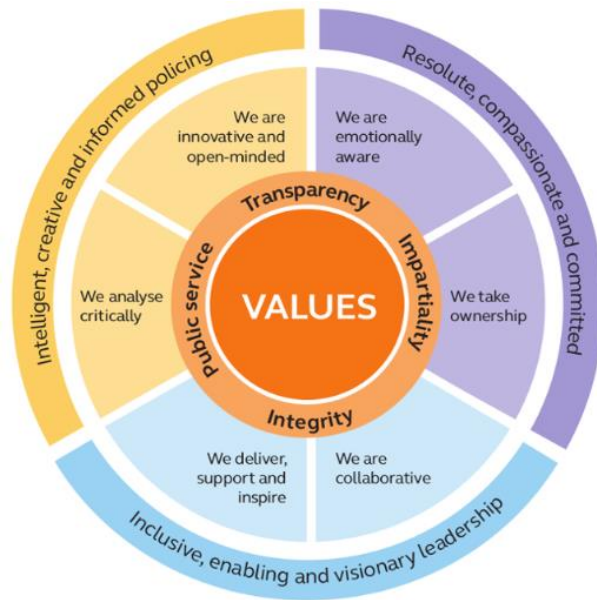
Better
outcomes
for the
public

Police Knowledge Fund



During my 22 year police service, problem solving has generally been based on operational experience and traditional practices, none of which is evaluated. ExPERT introduced me to Evidence-Based Policing, giving me tools to identify tried, tested and, therefore, more successful solutions. It has also given me the confidence to test my own assumptions, to develop new approaches...to provide a more effective service... The course has shown me academic principles aren't beyond me and has inspired me so much that I am soon to start a **Masters in Criminology**. Inspector Gareth Twigg, Devon and Cornwall police, ExPert PKF Collaboration

Education - Professional frameworks

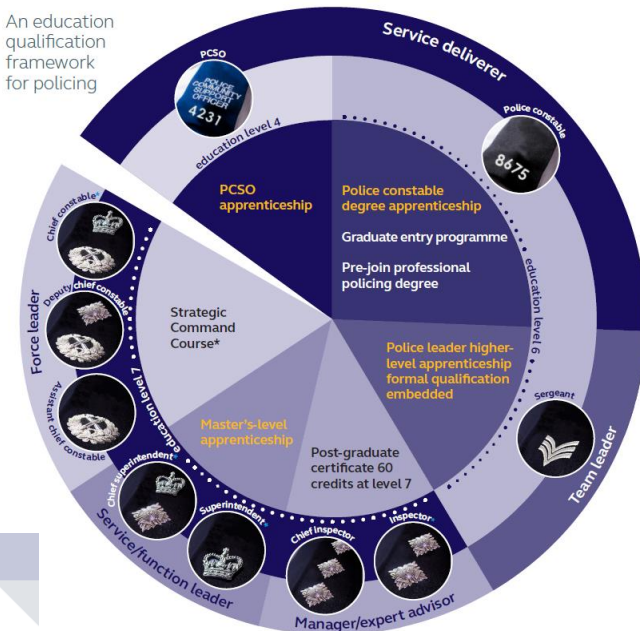


Professional Profiles

National Policing Curriculum

NationalPolicingCurriculumEnquiries@college.pnn.police.uk

An education qualification framework for policing



SCC and SPNAC review

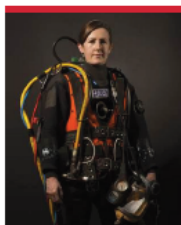
Chief Officer Appointments

License to Practice

Advanced Practitioner



College Bursary Scheme case study



Sergeant Lorna Dennison-Wilkins
(Sussex Police)

Where and how did you find out about the College Bursary Scheme?

I had been trying to find sponsorship for my studies. A very inspirational colleague helped me apply to the College Bursary Scheme, which was due to start.

What prompted you to apply?

I had been conducting research for six years, unfunded and alone, and knew the next step was to go to university to progress what I had already achieved. When I saw the College Bursary Scheme had been launched, I knew that it would be amazing to have financial assistance to help me achieve my aims. I also felt that support from this scheme would be much more than financial – it would be an endorsement of the value of my subject area and what I am doing. I feel so privileged to have been accepted onto the scheme and to have been given a bursary grant.

What and where are you studying?

I am doing a post-graduate research degree, studying the movement of bodies in inland waterways to help with missing persons search and investigations. I am studying at the Centre for Anatomy and Human Identification at the University of Dundee.

How has/will your study improve your work?

There are a number of aims for my study. I'm looking to collect and share data with the international search community regarding the movement of bodies in inland water.

I'm also aiming to improve learning to make us more effective in searching for and recovering bodies in water and help minimise the risk to search teams.

I hope my work will help us to reduce the search time needed to gain an earlier resolution in missing person cases and that we will be able to provide the data to different agencies to help prevent drowning incidents.

College Bursary Scheme case study



Acting Detective Sergeant Robert Ewin
(Cumbria Constabulary)

Where and how did you find out about the College Bursary Scheme?

I found out about the scheme on the College of Policing website while looking for research material.

What prompted you to apply?

I'd been told about the possibility of a College of Policing bursary at a research surgery hosted at the College's Harrogate site.

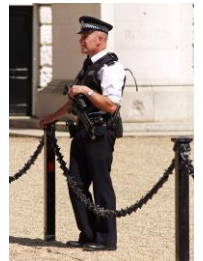
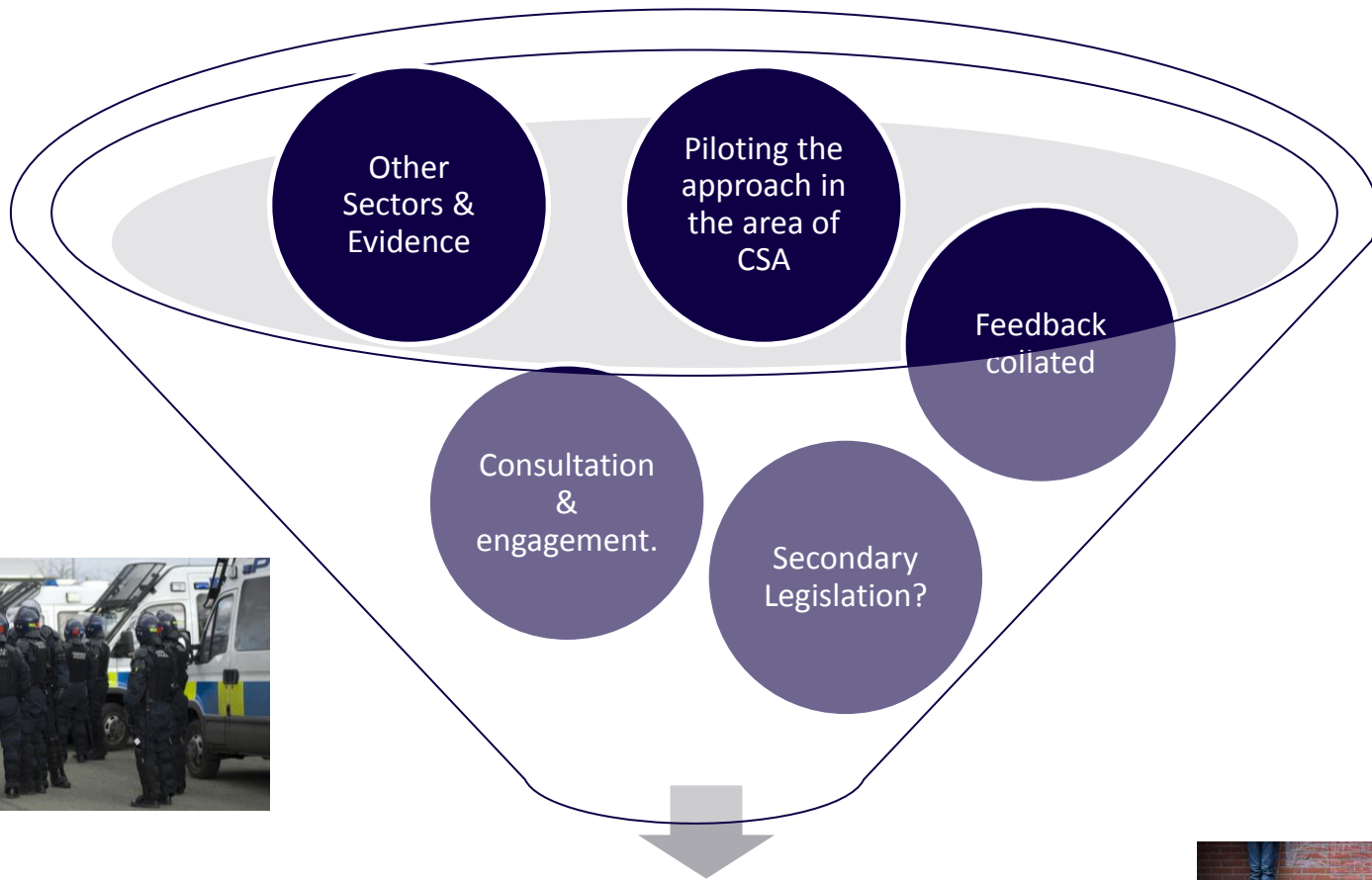
What and where are you studying?

I am studying for a PhD in criminal justice and law with the University of Cumbria. I work full-time and am currently an acting detective sergeant. I also do some work as an associate lecturer at the university.

How has/will your study improve your work?

A PhD is unlike most other types of study. You have a certain amount of freedom to plan your time and investigate something you feel passionate about. In the time I have spent on this programme, I have worked in roles as uniformed police officer and detective and am now covering a detective sergeant position. There are so many transferable skills between a PhD and my work as a police officer. The main skill, however, is being able to broaden your knowledge through searching for literature, identifying gaps in knowledge through understanding front-line and research evidence. In this respect, it's like searching for evidence in a criminal investigation.


Standards - Licence to practise



Authorised professional practice users

Police practitioners	Specialist practitioners	Chief officers
PCCs	HMIC, IPCC etc	Other emergency services and partners
Legal profession	Public/media	Everyone





College of
Policing

college.police.uk

Police Initial Responses to Domestic Abuse

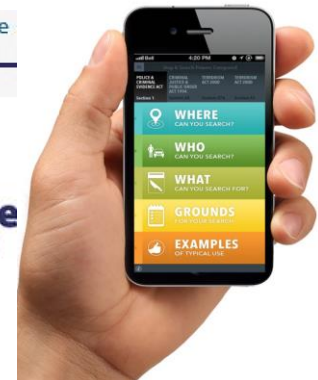
A systematic review

Carol Vigurs, Julia Wire, Andy Myhill, David Gough

Decision time?
Every day or hardly ever?
Higher or lower risk?

Evidence-based guidelines

- Officer safety
- Initial accounts
- Neighbourhood policing



Provide policing with the skills and knowledge needed to protect the public, and secure public trust

- **Knowledge:** developing research and infrastructure for improving evidence of 'what works'. Over time, this will ensure practice and standards are based on knowledge, not custom and convention.
- **Education:** supporting the development of individual members. We set requirements to assure the public of the quality and consistency of policing skills, and facilitate academic accreditation and recognition.
- **Standards:** drawing on the best available evidence of 'what works' to set standards in policing for forces and individuals, for example, through Authorised Professional Practice (APP) and peer review.

We will raise professional standards by using the policing knowledge base, our legal powers, our influence and connection with members and our ability to set educational requirements, test new ideas and innovate.

We will have succeeded when all police practitioners and decision makers are confident professionals able to operate with high levels of autonomy and accountability. There will be evidence of the public's trust in the police. Those in policing will see themselves as members of a profession and adhere to the disciplines of professional practice.